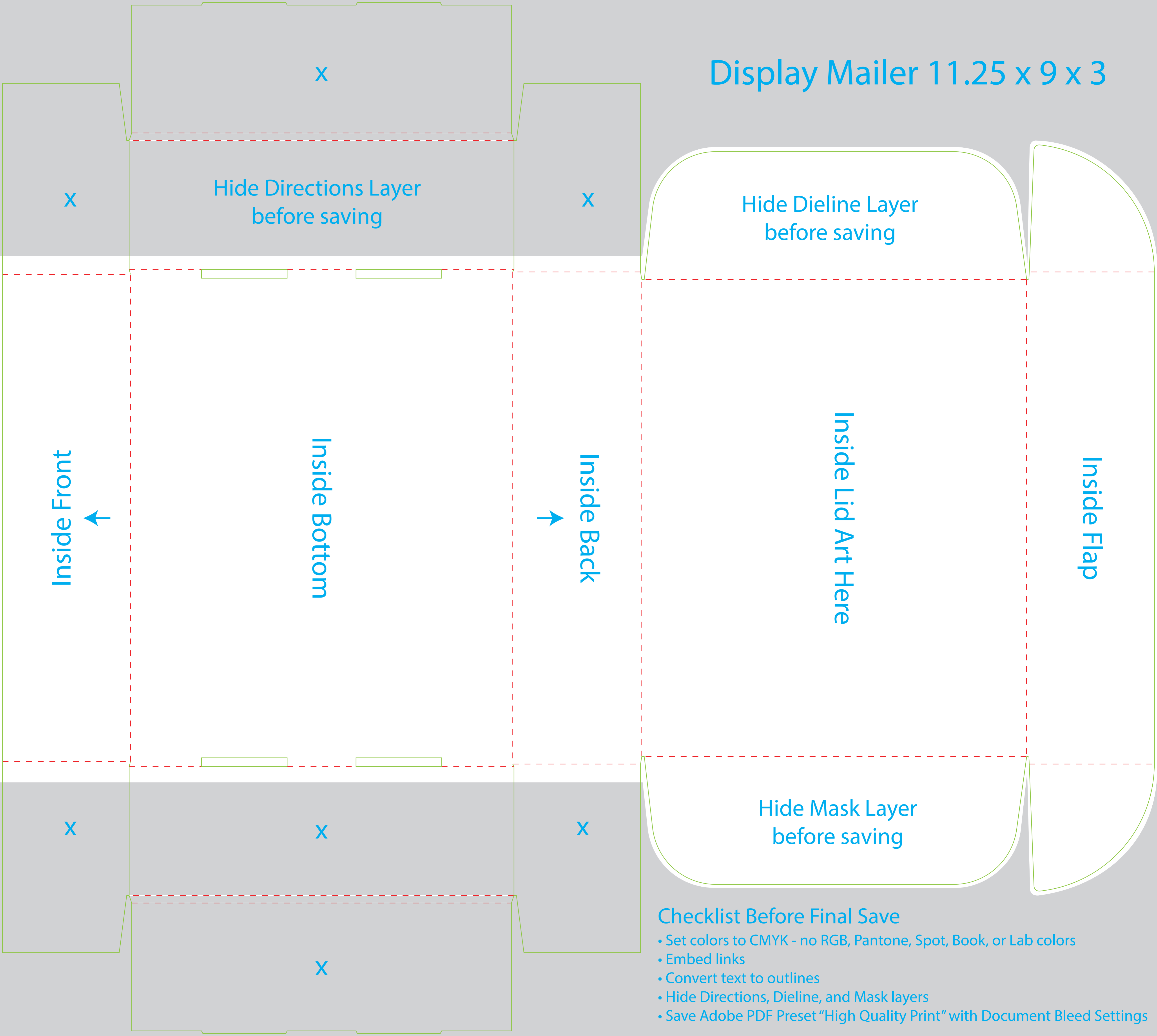


Display Mailer 11.25 x 9 x 3



Hide Directions Layer
before saving

Hide Dieline Layer
before saving

Hide Mask Layer
before saving

Inside Front

Inside Bottom

Inside Back

Inside Lid Art Here

Inside Flap

Checklist Before Final Save

- Set colors to CMYK - no RGB, Pantone, Spot, Book, or Lab colors
- Embed links
- Convert text to outlines
- Hide Directions, Dieline, and Mask layers
- Save Adobe PDF Preset "High Quality Print" with Document Bleed Settings